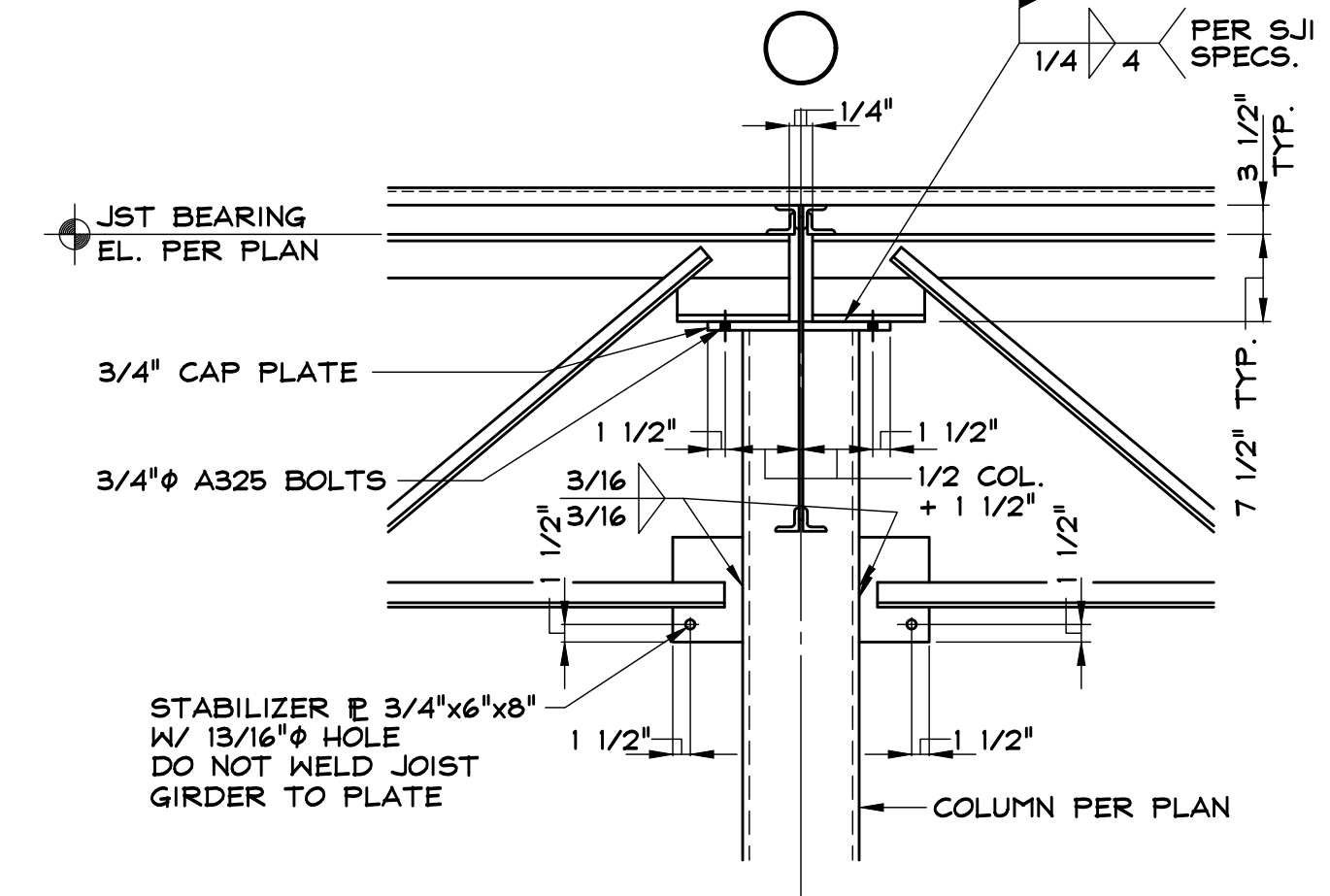
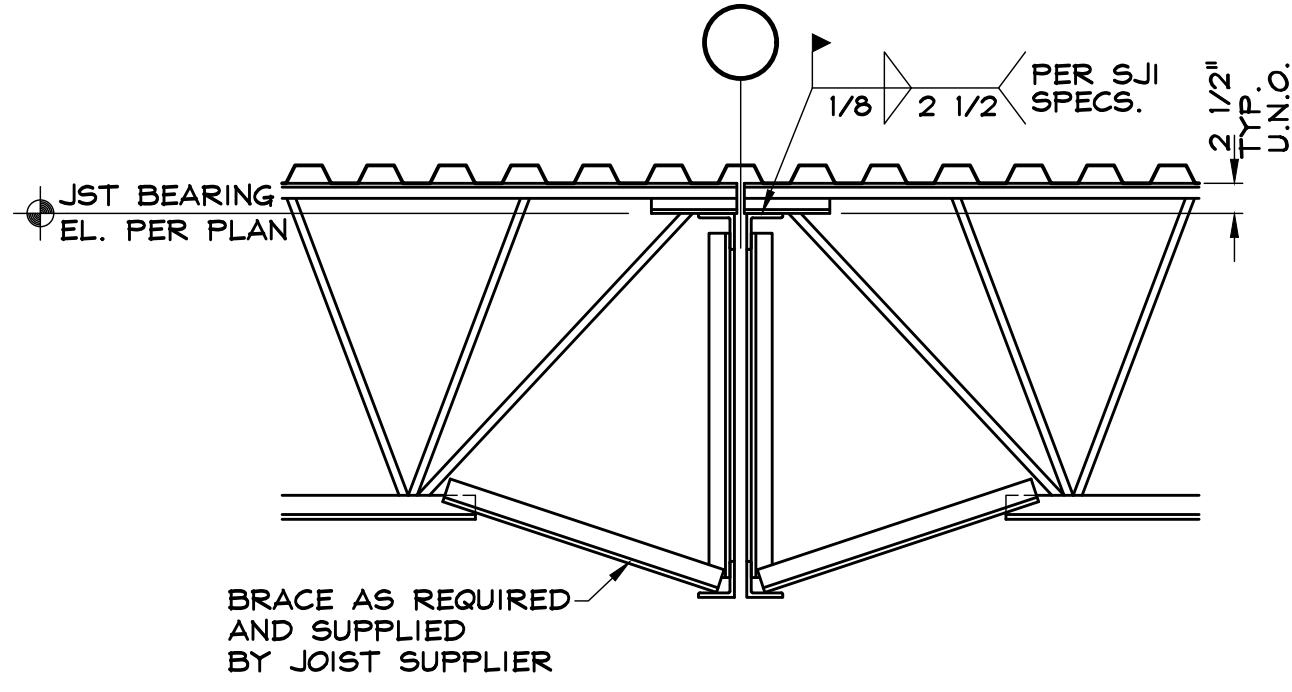
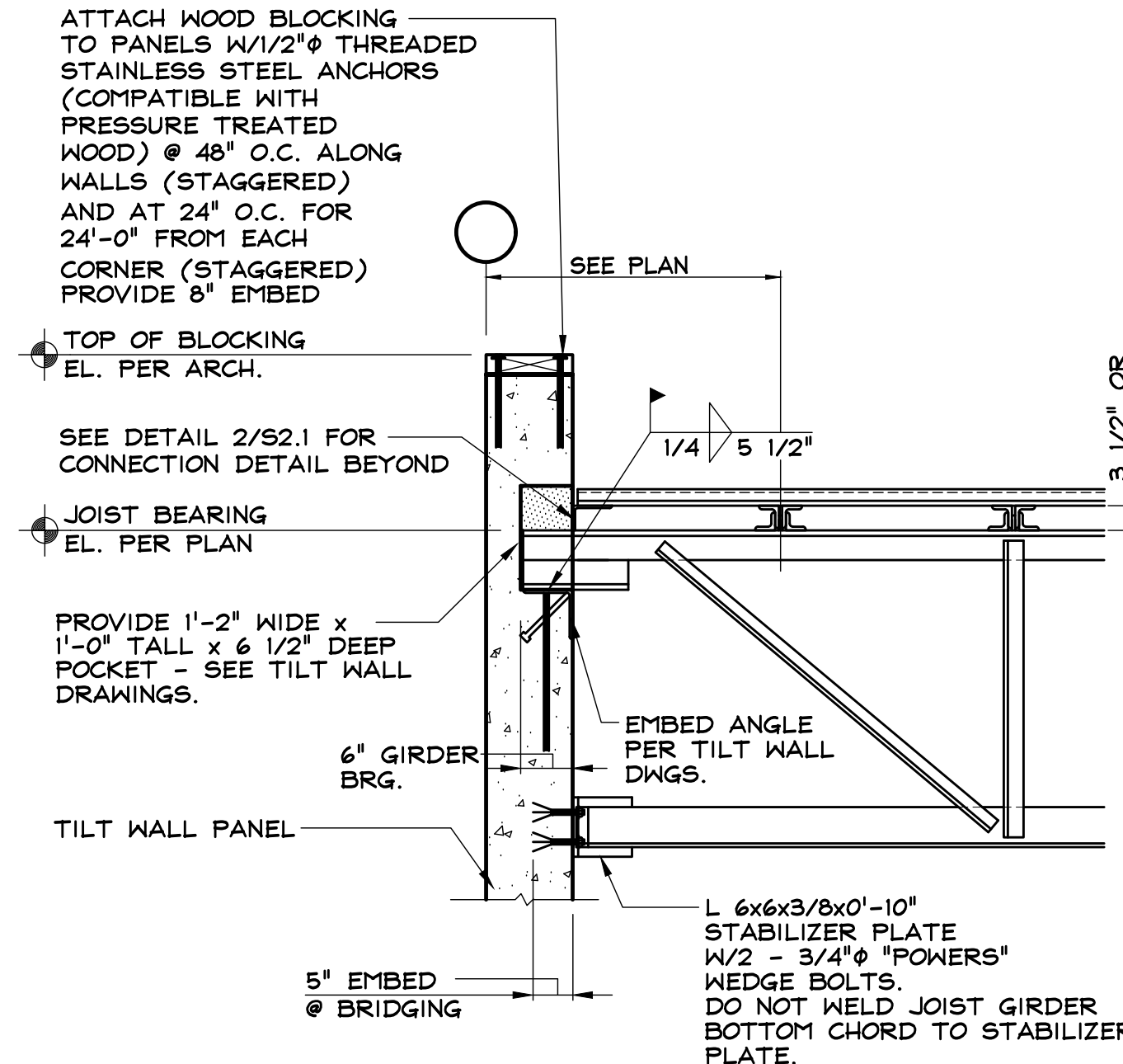


NOTE: BAR JOIST ADJACENT TO PANEL TO BE DESIGNED FOR NO CAMBER



DESIGN JOIST SEAT FOR 1,600 LB ROLL OVER FORCE

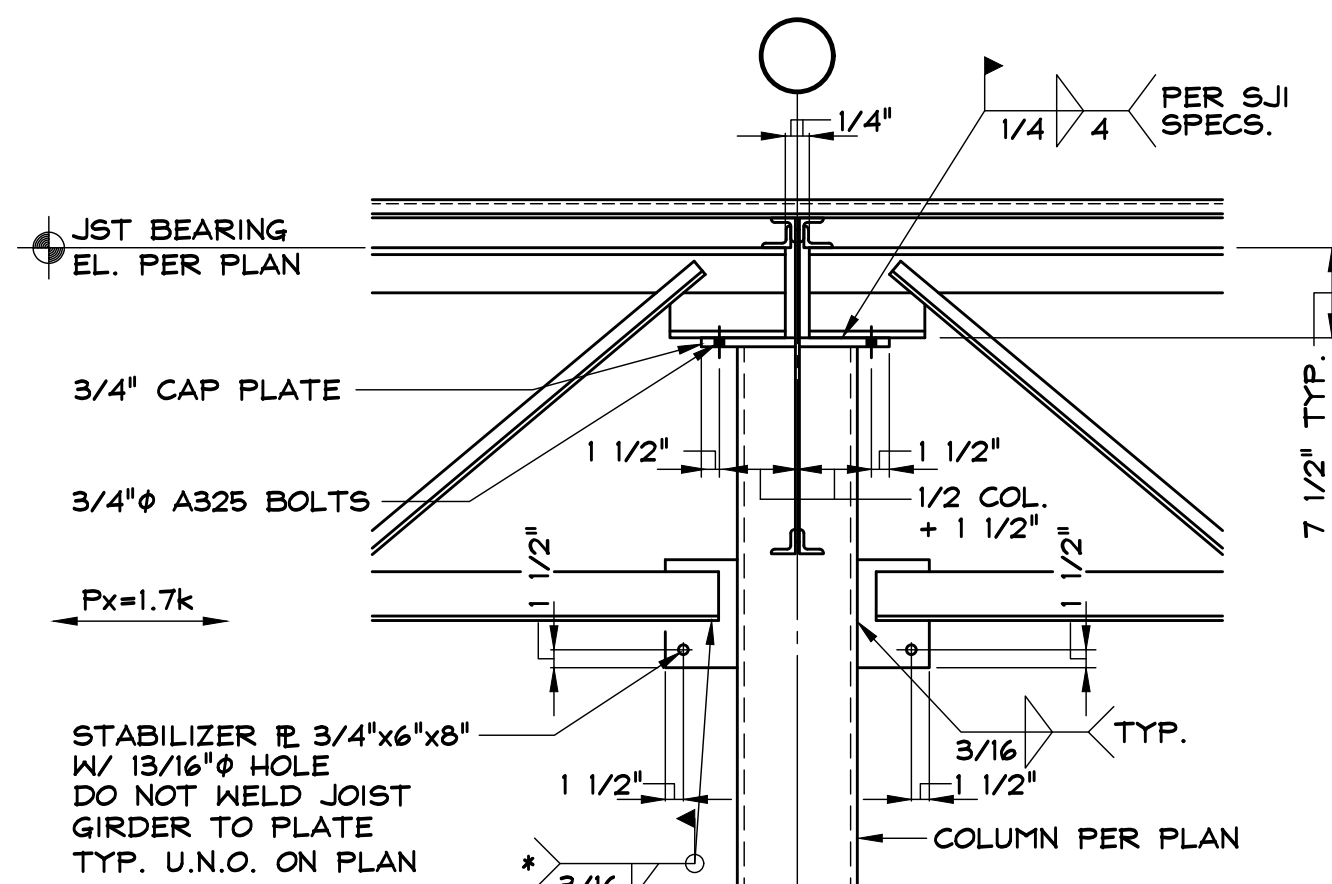
SECTION 1
SCALE: 3/4" = 1'-0"

SECTION 2
SCALE: 3/4" = 1'-0"

SECTION 3
SCALE: 3/4" = 1'-0"

SECTION 4
SCALE: 3/4" = 1'-0"

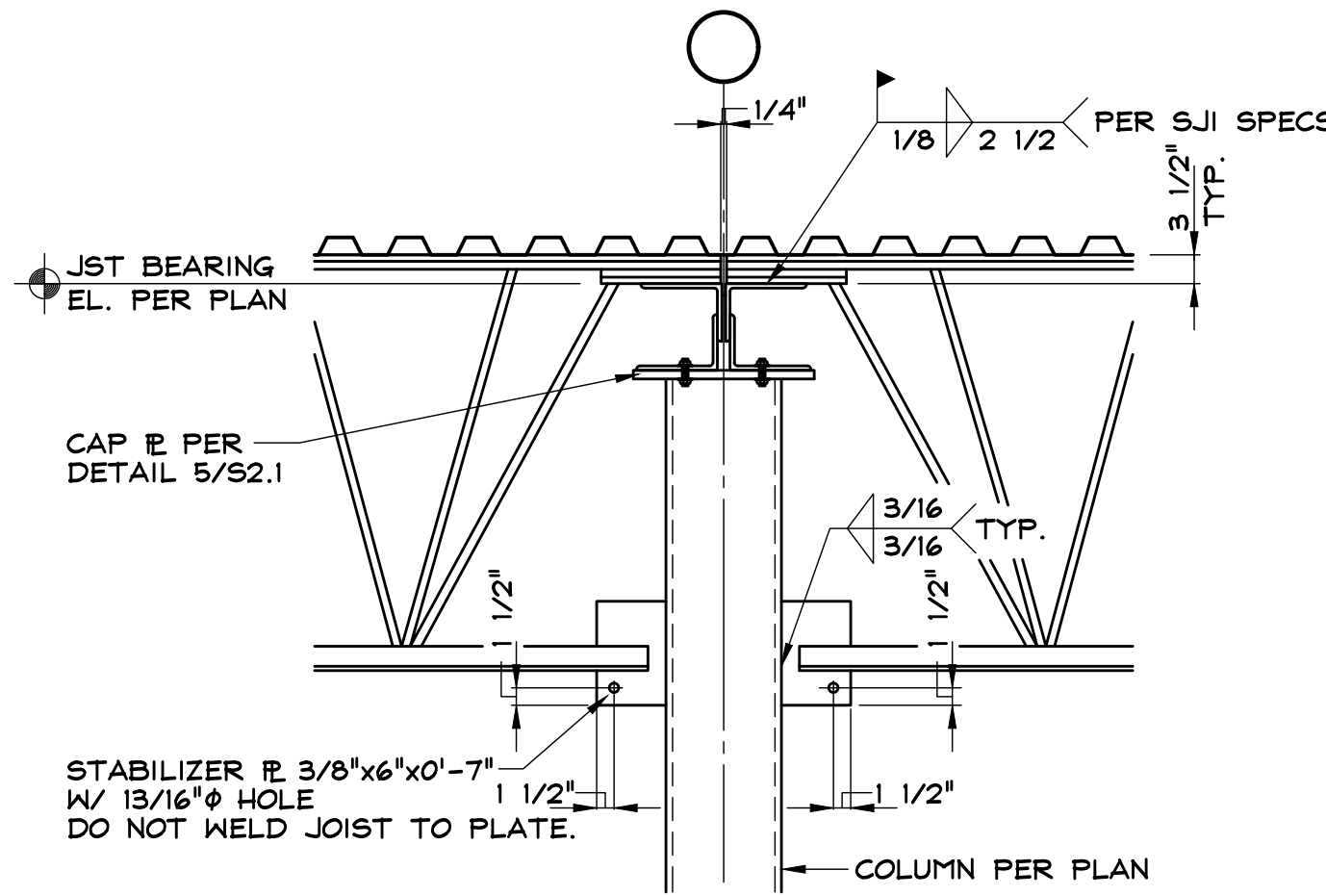
SECTION 5
SCALE: 3/4" = 1'-0"



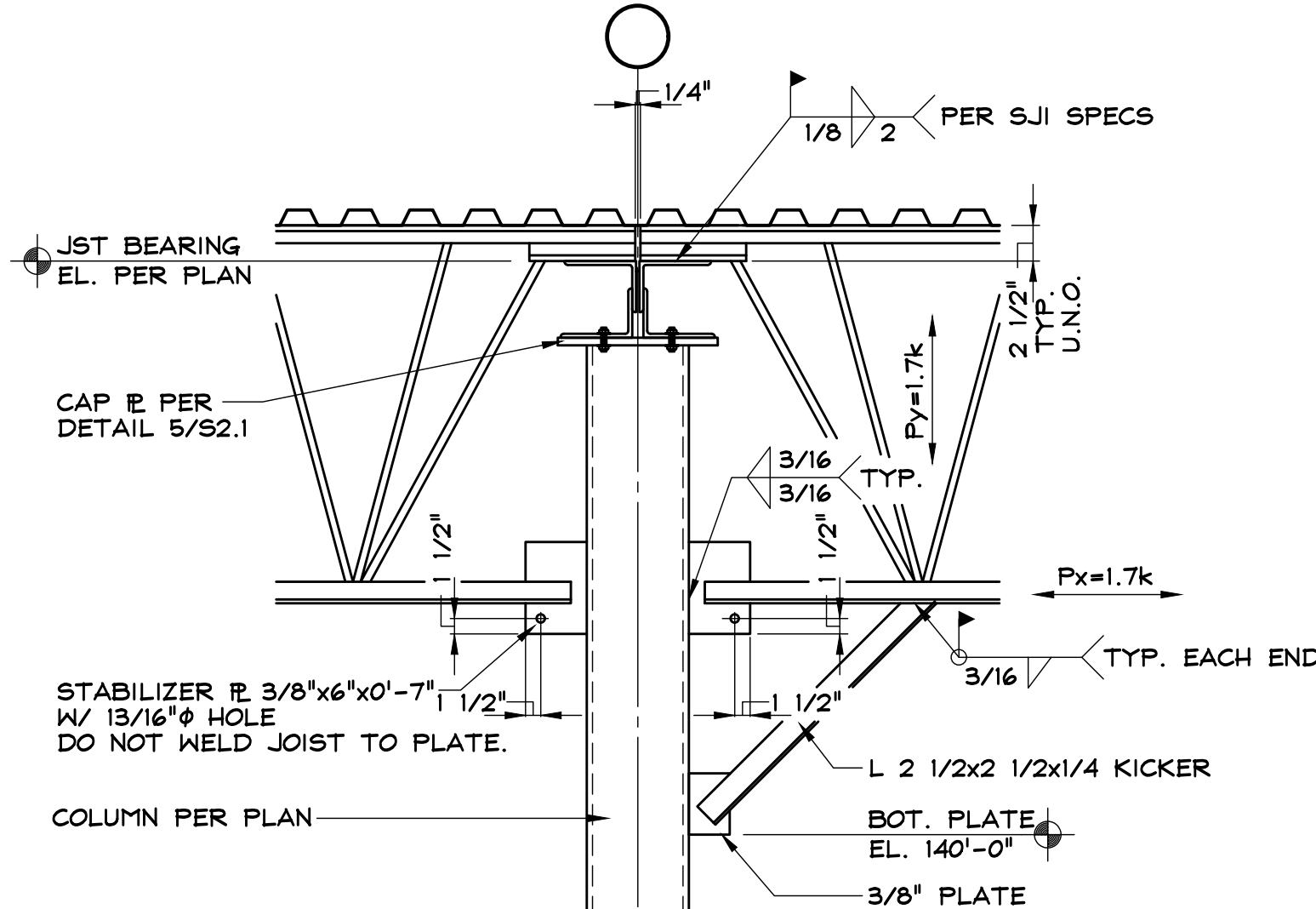
* WELD JOIST GIRDER BOTTOM CHORD TO STABILIZER PLATE ON ONE SIDE OF COLUMN ONLY. SEE PLAN FOR LOCATIONS

Px = BRACING FORCE REQUIRED FOR COLUMN (2% OF COLUMN LOAD TYP.)

SECTION 5A
SCALE: 3/4" = 1'-0"



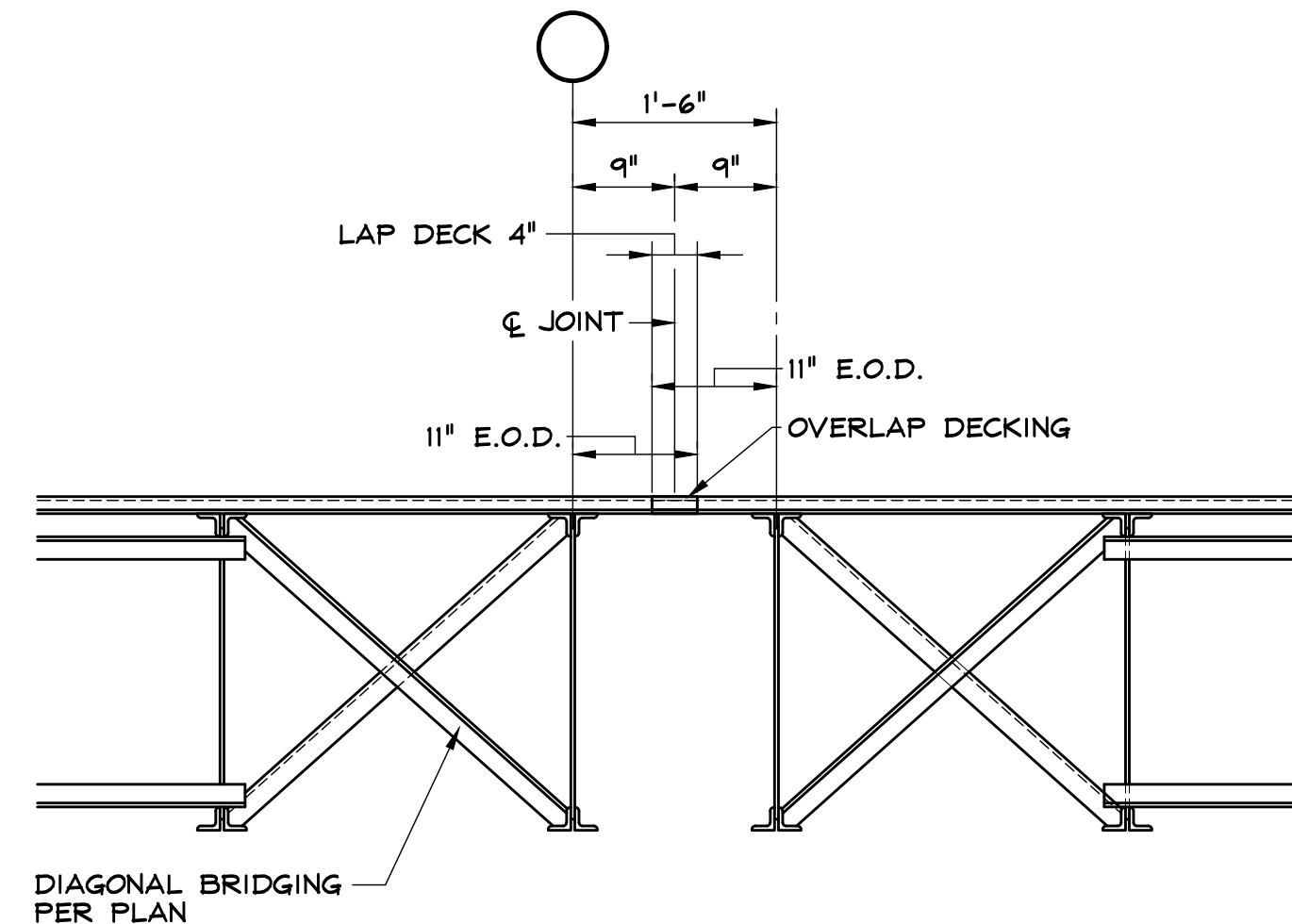
SECTION 6
SCALE: 3/4" = 1'-0"



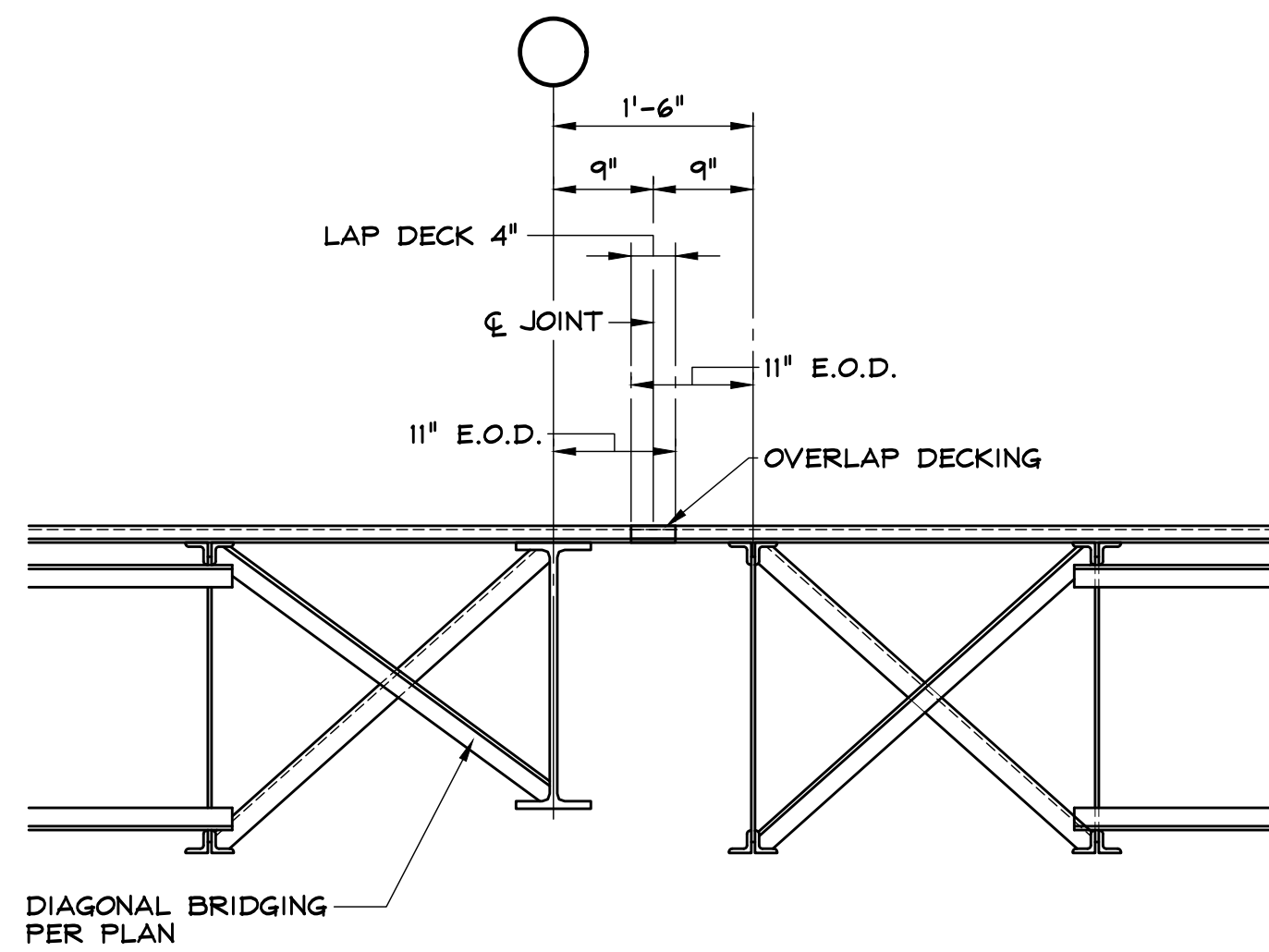
* WELD L 2 1/2x2 1/2x1/4 KICKER FROM CLOSEST BOTTOM CHORD PANEL POINT TO PLATE CENTERED ON COLUMN @ 136'-0" A.F.F. SEE PLAN FOR LOCATIONS

Px & Py = BRACING FORCE REQUIRED FOR COLUMN (2% OF COLUMN LOAD TYP.)

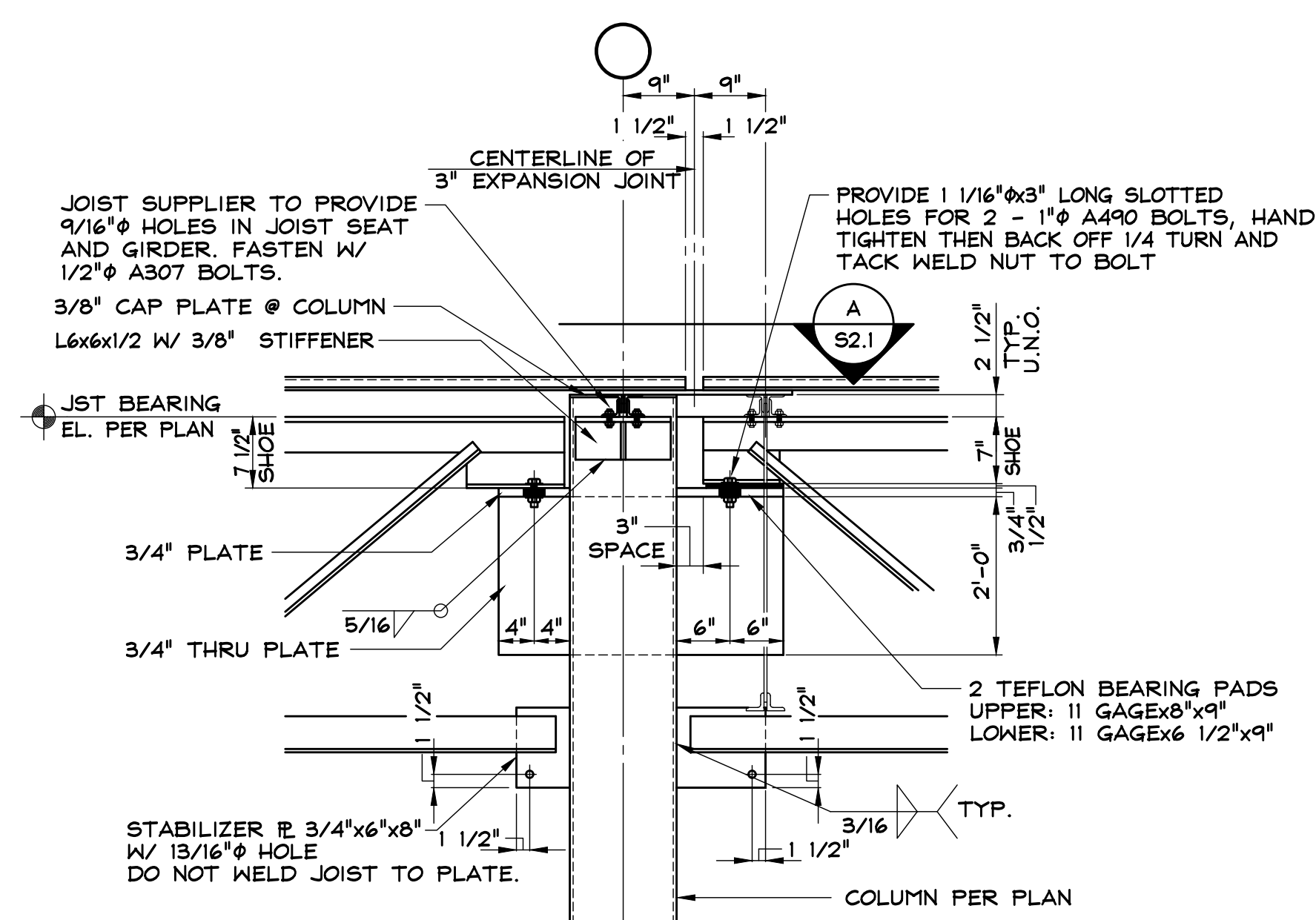
SECTION 6A
SCALE: 3/4" = 1'-0"



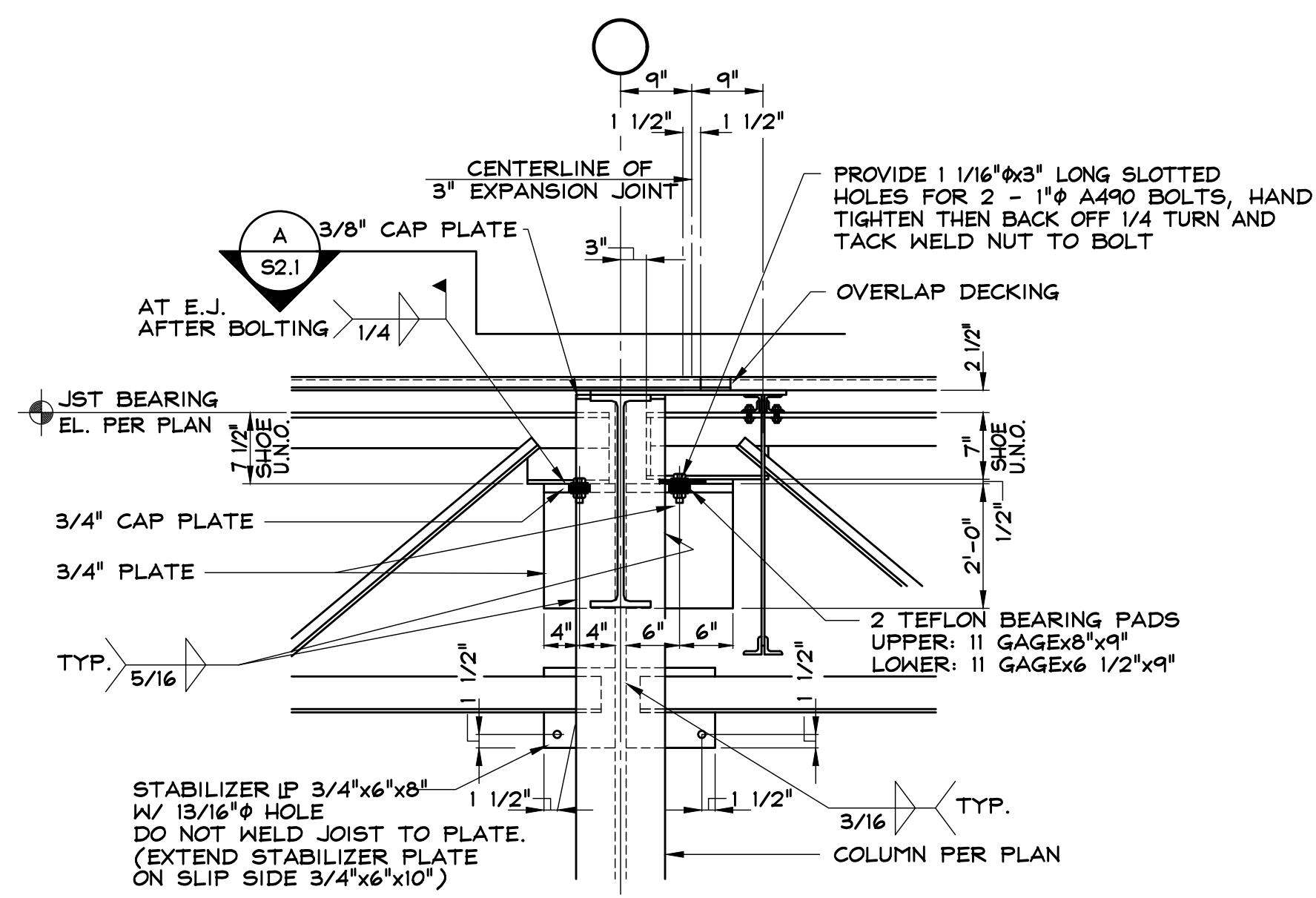
SECTION 7
SCALE: 3/4" = 1'-0"
(REF: ARCO DET 8/95)



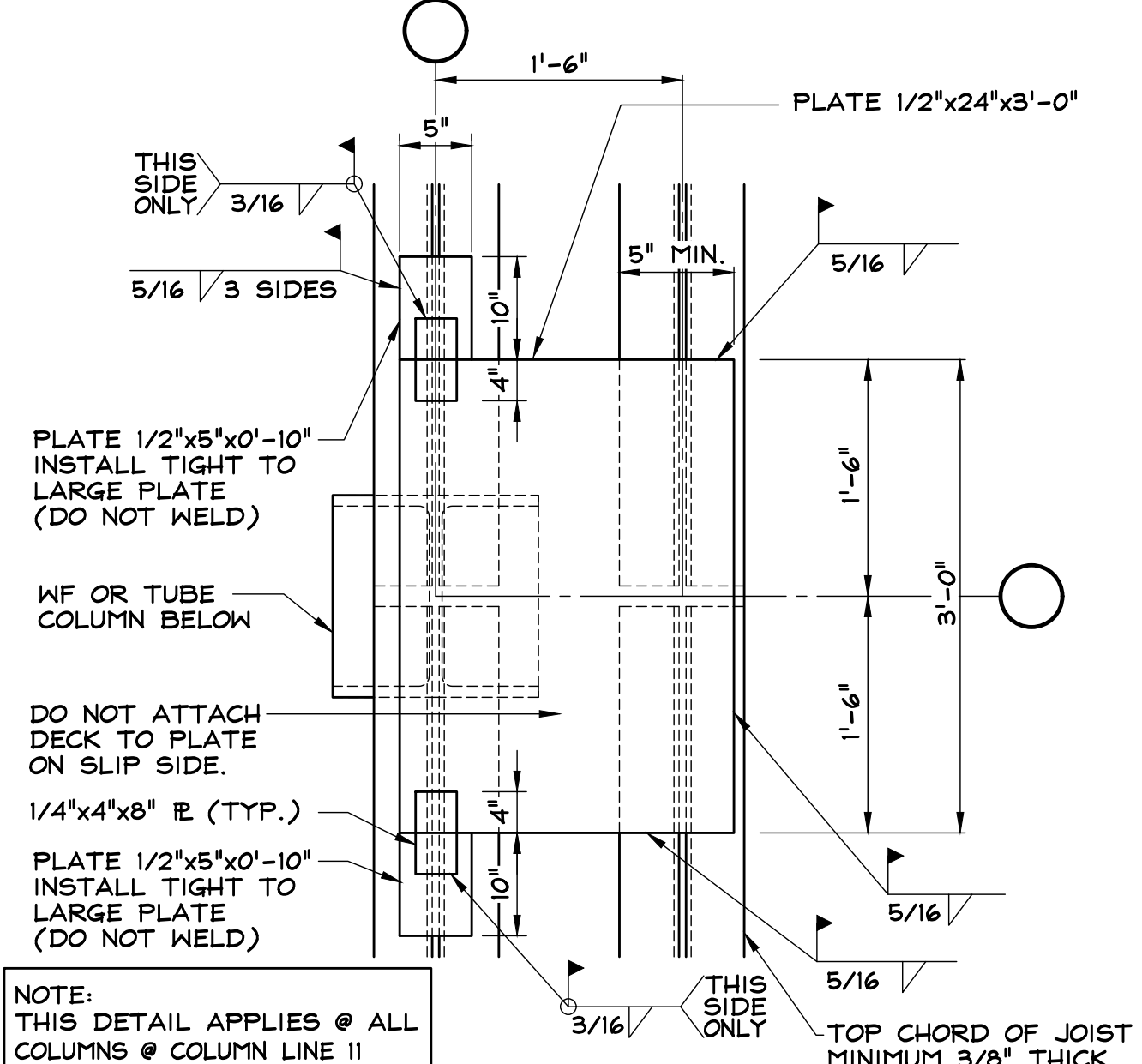
SECTION 8
SCALE: 3/4" = 1'-0"



SECTION 9
SCALE: 3/4" = 1'-0"



SECTION 10
SCALE: 3/4" = 1'-0"



DETAIL A
SCALE: NONE

DESIGNER / BUILDER

ARCO

DESIGN/BUILD INDUSTRIAL

44 SOUTH BROADWAY, SUITE 1003
WHITE PLAINS, NY 10601
P: 914.821.5535 F: 914.306.8010

PROJECT TITLE

LINCOLN EQUITIES - NY-312 - ALT. BLDG B

NY-312 & PUGSLEY RD,
SOUTHEAST, NY 10509

ARCHITECT

ADBI / DESIGN SERVICES LLC
44 SOUTH BROADWAY, SUITE 1003
WHITE PLAINS, NY 10601

CIVIL ENGINEER

LANGAN ENGINEERING
300 KIMBALL DRIVE
PARSIPPANY, NJ 07054

STRUCTURAL ENGINEER

SMITH/ROBERTS AND ASSOCIATES, INC.
6501 BLUFF RD.
INDIANAPOLIS, INDIANA 46217

MECHANICAL ENGINEER

NATIONAL DESIGN/BUILD SERVICES
11840 BORMAN DRIVE
ST. LOUIS, MO 63146

ELECTRICAL ENGINEER

FBX ENGINEERING
5 CHRISTY DRIVE, SUITE 307
CHADDS FORD, PA 19317

PLUMBING ENGINEER

MCCARTHY ENGINEERING ASSOCIATES, INC.
315 EAST SECOND STREET
BOYERTOWN, PA 19512

FIRE PROTECTION ENGINEER

S A COMUALE CO. INC.
2900 NEWPARK DRIVE
BARBERTON, OH 44203

DESIGNER / BUILDER

ARCO

DESIGN/BUILD INDUSTRIAL

44 SOUTH BROADWAY, SUITE 1003
WHITE PLAINS, NY 10601
P: 914.821.5535 F: 914.306.8010

PROJECT TITLE

LINCOLN EQUITIES - NY-312 - ALT. BLDG B

NY-312 & PUGSLEY RD,
SOUTHEAST, NY 10509

ARCHITECT

ADBI / DESIGN SERVICES LLC
44 SOUTH BROADWAY, SUITE 1003
WHITE PLAINS, NY 10601

CIVIL ENGINEER

LANGAN ENGINEERING
300 KIMBALL DRIVE
PARSIPPANY, NJ 07054

STRUCTURAL ENGINEER

SMITH/ROBERTS AND ASSOCIATES, INC.
6501 BLUFF RD.
INDIANAPOLIS, INDIANA 46217

MECHANICAL ENGINEER

NATIONAL DESIGN/BUILD SERVICES
11840 BORMAN DRIVE
ST. LOUIS, MO 63146

ELECTRICAL ENGINEER

FBX ENGINEERING
5 CHRISTY DRIVE, SUITE 307
CHADDS FORD, PA 19317

PLUMBING ENGINEER

MCCARTHY ENGINEERING ASSOCIATES, INC.
315 EAST SECOND STREET
BOYERTOWN, PA 19512

FIRE PROTECTION ENGINEER

S A COMUALE CO. INC.
2900 NEWPARK DRIVE
BARBERTON, OH 44203

DESIGNER / BUILDER

ARCO

DESIGN/BUILD INDUSTRIAL

44 SOUTH BROADWAY, SUITE 1003
WHITE PLAINS, NY 10601
P: 914.821.5535 F: 914.306.8010

PROJECT TITLE

LINCOLN EQUITIES - NY-312 - ALT. BLDG B

NY-312 & PUGSLEY RD,
SOUTHEAST, NY 10509

ARCHITECT

ADBI / DESIGN SERVICES LLC
44 SOUTH BROADWAY, SUITE 1003
WHITE PLAINS, NY 10601

CIVIL ENGINEER

LANGAN ENGINEERING
300 KIMBALL DRIVE
PARSIPPANY, NJ 07054

STRUCTURAL ENGINEER

SMITH/ROBERTS AND ASSOCIATES, INC.
6501 BLUFF RD.
INDIANAPOLIS, INDIANA 46217

MECHANICAL ENGINEER

NATIONAL DESIGN/BUILD SERVICES
11840 BORMAN DRIVE
ST. LOUIS, MO 63146

ELECTRICAL ENGINEER

FBX ENGINEERING
5 CHRISTY DRIVE, SUITE 307
CHADDS FORD, PA 19317

PLUMBING ENGINEER

MCCARTHY ENGINEERING ASSOCIATES, INC.
315 EAST SECOND STREET
BOYERTOWN, PA 19512

FIRE PROTECTION ENGINEER

S A COMUALE CO. INC.
2900 NEWPARK DRIVE
BARBERTON, OH 44203

DESIGNER / BUILDER

ARCO

DESIGN/BUILD INDUSTRIAL

44 SOUTH BROADWAY, SUITE 1003
WHITE PLAINS, NY 10601
P: 914.821.5535 F: 914.306.8010

PROJECT TITLE

LINCOLN EQUITIES - NY-312 - ALT. BLDG B

NY-312 & PUGSLEY RD,
SOUTHEAST, NY 10509

ARCHITECT

ADBI / DESIGN SERVICES LLC
44 SOUTH BROADWAY, SUITE 1003
WHITE PLAINS, NY 10601

CIVIL ENGINEER

LANGAN ENGINEERING
300 KIMBALL DRIVE
PARSIPPANY, NJ 07054

STRUCTURAL ENGINEER

SMITH/ROBERTS AND ASSOCIATES, INC.
6501 BLUFF RD.
INDIANAPOLIS, INDIANA 46217

MECHANICAL ENGINEER

NATIONAL DESIGN/BUILD SERVICES
11840 BORMAN DRIVE
ST. LOUIS, MO 63146

ELECTRICAL ENGINEER

FBX ENGINEERING
5 CHRISTY DRIVE, SUITE 307
CHADDS FORD, PA 19317

PLUMBING ENGINEER

MCCARTHY ENGINEERING ASSOCIATES, INC.
315 EAST SECOND STREET
BOYERTOWN, PA 19512

FIRE PROTECTION ENGINEER

S A COMUALE CO. INC.
2900 NEWPARK DRIVE
BARBERTON, OH 44203

DESIGNER / BUILDER

ARCO

DESIGN/BUILD INDUSTRIAL

44 SOUTH BROADWAY, SUITE 1003
WHITE PLAINS, NY 10601
P: 914.821.5535 F: 914.306.8010

PROJECT TITLE

LINCOLN EQUITIES - NY-312 - ALT. BLDG B

NY-312 & PUGSLEY RD,
SOUTHEAST, NY 10509

ARCHITECT

ADBI / DESIGN SERVICES LLC
44 SOUTH BROADWAY, SUITE 1003
WHITE PLAINS, NY 10601

CIVIL ENGINEER

LANGAN ENGINEERING
300 KIMBALL DRIVE
PARSIPPANY, NJ 07054

STRUCTURAL ENGINEER

SMITH/ROBERTS AND ASSOCIATES, INC.
6501 BLUFF RD.
INDIANAPOLIS, INDIANA 46217

MECHANICAL ENGINEER

NATIONAL DESIGN/BUILD SERVICES
11840 BORMAN DRIVE
ST. LOUIS, MO 63146

ELECTRICAL ENGINEER

FBX ENGINEERING
5 CHRISTY DRIVE, SUITE 307
CHADDS FORD, PA 19317

PLUMBING ENGINEER

MCCARTHY ENGINEERING ASSOCIATES, INC.
315 EAST SECOND STREET
BOYERTOWN, PA 19512

FIRE PROTECTION ENGINEER

S A COMUALE CO. INC.
2900 NEWPARK DRIVE
BARBERTON, OH 44203

DESIGNER / BUILDER

ARCO

DESIGN/BUILD INDUSTRIAL

44 SOUTH BROADWAY, SUITE 1003
WHITE PLAINS, NY 10601
P: 914.821.5535 F: 914.306.8010

PROJECT TITLE

LINCOLN EQUITIES - NY-312 - ALT. BLDG B

NY-312 & PUGSLEY RD,
SOUTHEAST, NY 10509

ARCHITECT

ADBI / DESIGN SERVICES LLC
44 SOUTH BROADWAY, SUITE 1003
WHITE PLAINS, NY 10601

CIVIL ENGINEER

LANGAN ENGINEERING
300 KIMBALL DRIVE
PARSIPPANY, NJ 07054

STRUCTURAL ENGINEER

SMITH/ROBERTS AND ASSOCIATES, INC.
6501 BLUFF RD.
INDIANAPOLIS, INDIANA 46217

MECHANICAL ENGINEER

NATIONAL DESIGN/BUILD SERVICES
11840 BORMAN DRIVE
ST. LOUIS, MO 63146

ELECTRICAL ENGINEER

FBX ENGINEERING
5 CHRISTY DRIVE, SUITE 307
CHADDS FORD, PA 19317

PLUMBING ENGINEER

MCCARTHY ENGINEERING ASSOCIATES, INC.
315 EAST SECOND STREET
BOYERTOWN, PA 19512

FIRE PROTECTION ENGINEER

S A COMUALE CO. INC.
2900 NEWPARK DRIVE
BARBERTON, OH 44203

DESIGNER / BUILDER

ARCO

DESIGN/BUILD INDUSTRIAL

44 SOUTH BROADWAY, SUITE 1003
WHITE PLAINS, NY 10601
P: 914.821.5535 F: 914.306.8010

PROJECT TITLE

LINCOLN EQUITIES - NY-312 - ALT. BLDG B

NY-312 & PUGSLEY RD,
SOUTHEAST, NY 10509

ARCHITECT

ADBI / DESIGN SERVICES LLC
44 SOUTH BROADWAY, SUITE 1003
WHITE PLAINS, NY 10601

CIVIL ENGINEER

LANGAN ENGINEERING
300 KIMBALL DRIVE
PARSIPPANY, NJ 07054

STRUCTURAL ENGINEER

SMITH/ROBERTS AND ASSOCIATES, INC.
6501 BLUFF RD.
INDIANAPOLIS, INDIANA 46217

MECHANICAL ENGINEER

NATIONAL DESIGN/BUILD SERVICES
11840 BORMAN DRIVE
ST. LOUIS, MO 63146

ELECTRICAL ENGINEER

FBX ENGINEERING
5 CHRISTY DRIVE, SUITE 307
CHADDS FORD, PA 19317

PLUMBING ENGINEER

MCCARTHY ENGINEERING ASSOCIATES, INC.
315 EAST SECOND STREET
BOYERTOWN, PA 19512

FIRE PROTECTION ENGINEER

S A COMUALE CO. INC.
2900 NEWPARK DRIVE
BARBERTON, OH 44203

DESIGNER / BUILDER

ARCO

DESIGN/BUILD INDUSTRIAL

44 SOUTH BROADWAY, SUITE 1003
WHITE PLAINS, NY 10601
P: 914.821.5535 F: 914.306.8010

PROJECT TITLE

LINCOLN EQUITIES - NY-312 - ALT. BLDG B

NY-312 & PUGSLEY RD,
SOUTHEAST, NY 10509

ARCHITECT

ADBI / DESIGN SERVICES LLC
44 SOUTH BROADWAY, SUITE 1003
WHITE PLAINS, NY 10601

CIVIL ENGINEER

LANGAN ENGINEERING
300 KIMBALL DRIVE
PARSIPPANY, NJ 07054

STRUCTURAL ENGINEER

SMITH/ROBERTS AND ASSOCIATES, INC.
6501 BLUFF RD.
INDIANAPOLIS, INDIANA 46217

MECHANICAL ENGINEER

NATIONAL DESIGN/BUILD SERVICES
11840 BORMAN DRIVE
ST. LOUIS, MO 63146

ELECTRICAL ENGINEER

FBX ENGINEERING
5 CHRISTY DRIVE, SUITE 307
CHADDS FORD, PA 19317

PLUMBING ENGINEER

MCCARTHY ENGINEERING ASSOCIATES, INC.
315 EAST SECOND STREET
BOYERTOWN, PA 19512

FIRE PROTECTION ENGINEER

S A COMUALE CO. INC.
2900 NEWPARK DRIVE
BARBERTON, OH 44203